

# Bow Valley

1,279 SF



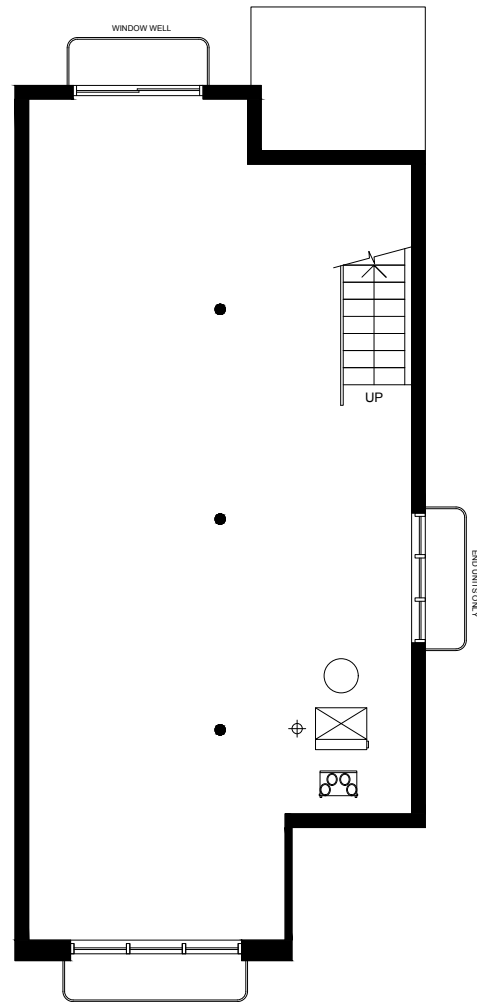
## Bow Valley

Inspired by the Bow River Valley, a scenic area located east of Innisfail.

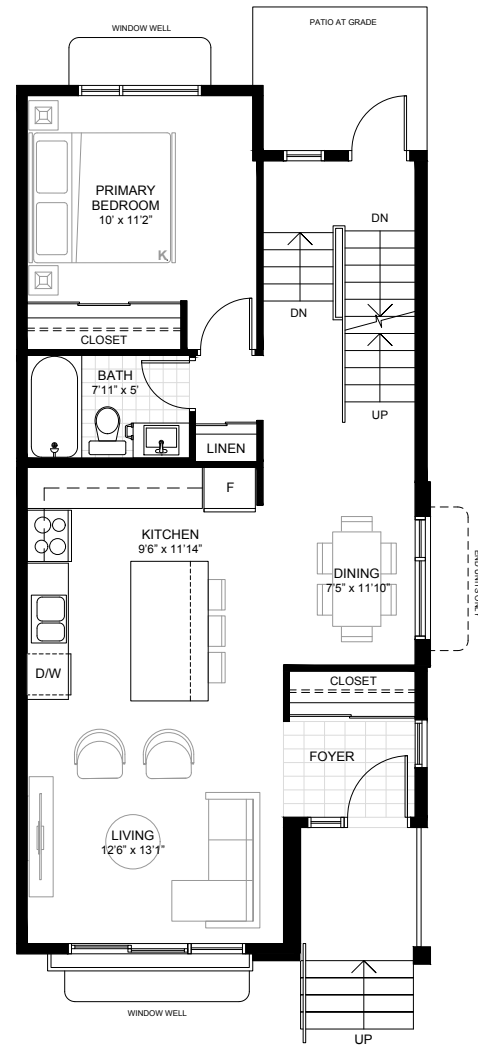


# UPPER VISTA

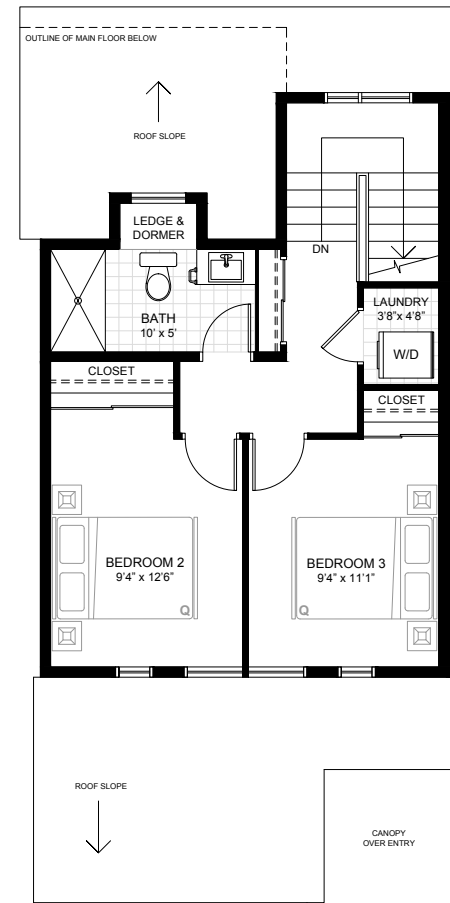
THE LAKEVIEW RESIDENCES ON DODDS LAKE



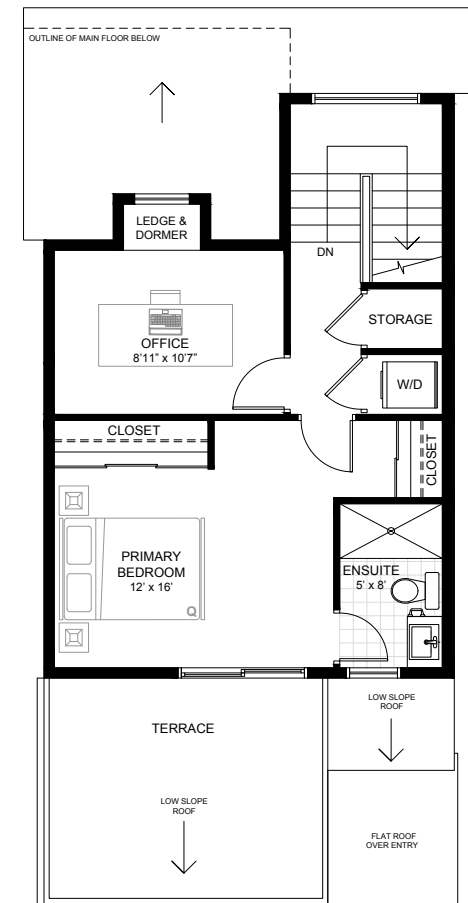
**BASEMENT**  
781 SQ FT



**GROUND FLOOR**  
781 SQ FT



**SECOND FLOOR**  
498 SQ FT



**SECOND FLOOR OPTION 2**  
498 SQ FT

The Developer intends to commence the introduction of the above project to potential purchasers. The Developer has prepared certain information, brochures, descriptions, materials, plans, specifications, and details (all collectively called "marketing materials") regarding the Project and is disclosing and discussing the same with potential purchasers. All marketing materials are being provided for illustration and discussion purposes only and may not be relied upon in any way. Any such materials are preliminary and may be changed or modified in any way, at any time, without notice to any party. Details, dimensions, sizes, specifications, layouts, and materials are approximate and are subject to change without notice. Pricing and availability are subject to change without notice. The Vendor reserves the right to substitute any materials used in construction. The Vendor, in its sole discretion, may, at any time, without notice to any party, make any deletions, changes, or modifications to the Features and Finishes and any Marketing Material. Renderings are an artist's concept. Any statistics, financial, descriptions, and photos herein are for illustration purposes only. Consult your own sales representative or relevant professional. No representation or warranty, express or implied, is made herein and no reliance should be made in any way. E.&O.E.

# Livingstone

1,339 SF

3  2.5 



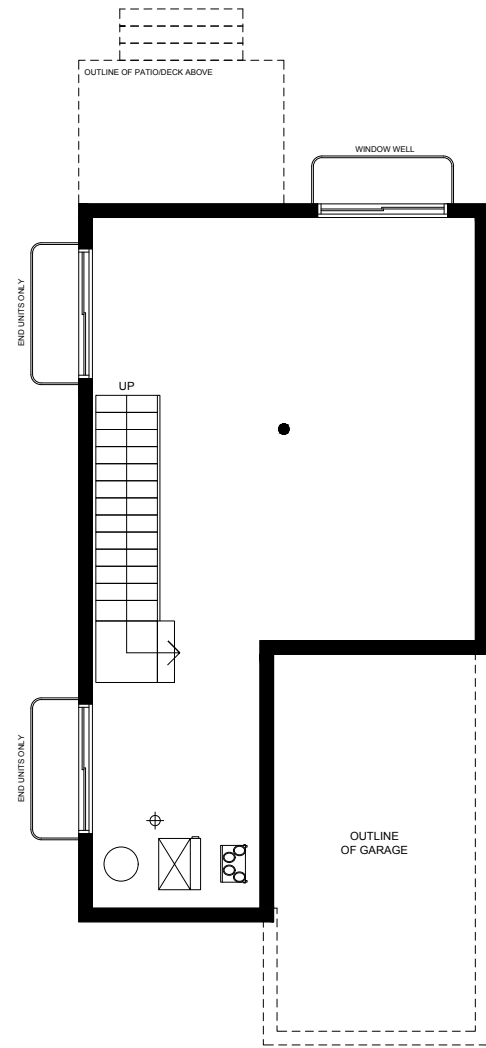
## Livingstone

Inspired by the Livingstone Range, a mountain range located southwest of Innisfail.

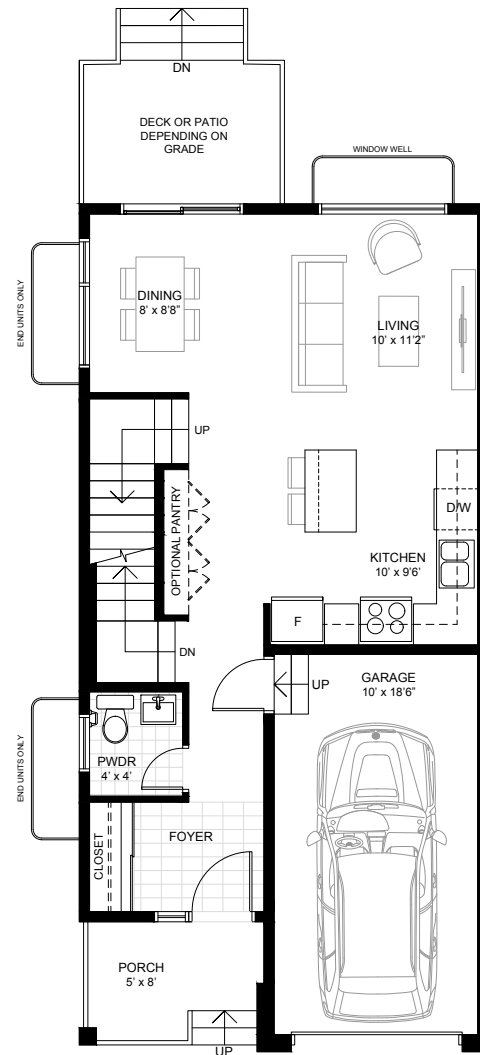


# UPPER VISTA

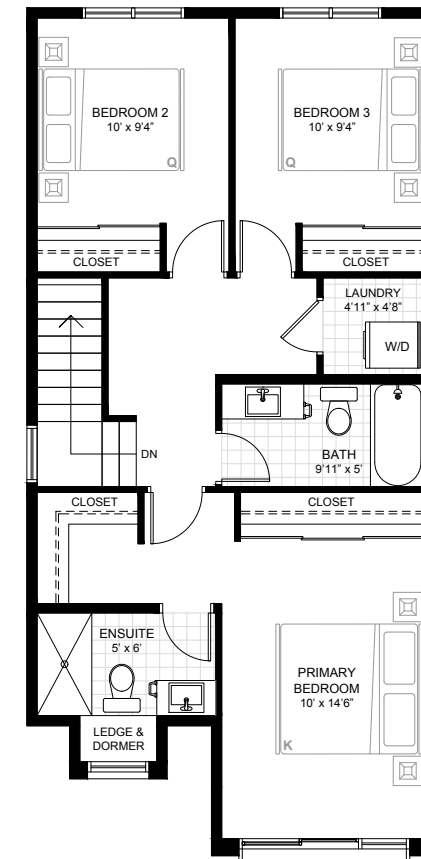
THE LAKEVIEW RESIDENCES  
ON DODDS LAKE



**BASEMENT**  
563 SQ FT



**GROUND FLOOR**  
563 SQ FT  
GARAGE 203 SQ FT



**SECOND FLOOR**  
776 SQ FT

The Developer intends to commence the introduction of the above project to potential purchasers. The Developer has prepared certain information, brochures, descriptions, materials, plans, specifications, and details (all collectively called "marketing materials") regarding the Project and is disclosing and discussing the same with potential purchasers. All marketing materials are being provided for illustration and discussion purposes only and may not be relied upon in any way. Any such materials are preliminary and may be changed or modified in any way, at any time, without notice to any party. Details, dimensions, sizes, specifications, layouts, and materials are approximate and are subject to change without notice. Pricing and availability are subject to change without notice. The Vendor reserves the right to substitute any materials used in construction. The Vendor, in its sole discretion, may, at any time, without notice to any party, make any deletions, changes, or modifications to the Features and Finishes and any Marketing Material. Renderings are an artist's concept. Any statistics, financial, descriptions, and photos herein are for illustration purposes only. Consult your own sales representative or relevant professional. No representation or warranty, express or implied, is made herein and no reliance should be made in any way. E.&O.E.

**EVERTRUST**

DEVELOPMENT GROUP CANADA INC.

# Sundance

2,174 SF

3  3.5  1 



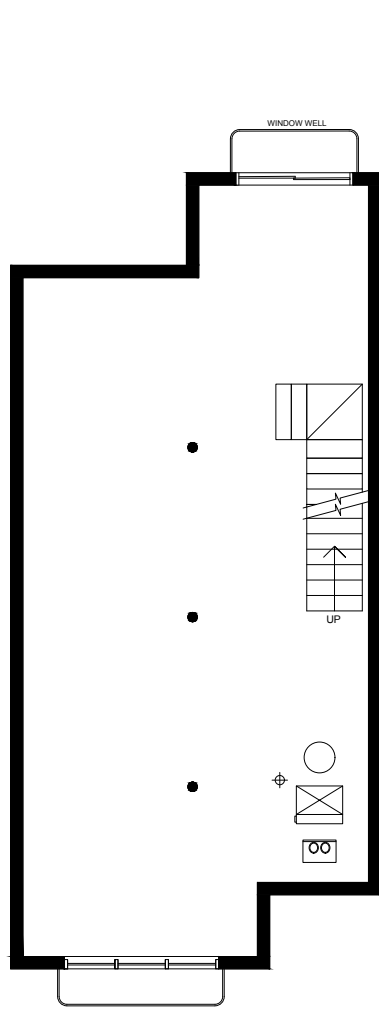
## Sundance

Inspired by the Sundance Range, a mountain range located south of Innisfail.

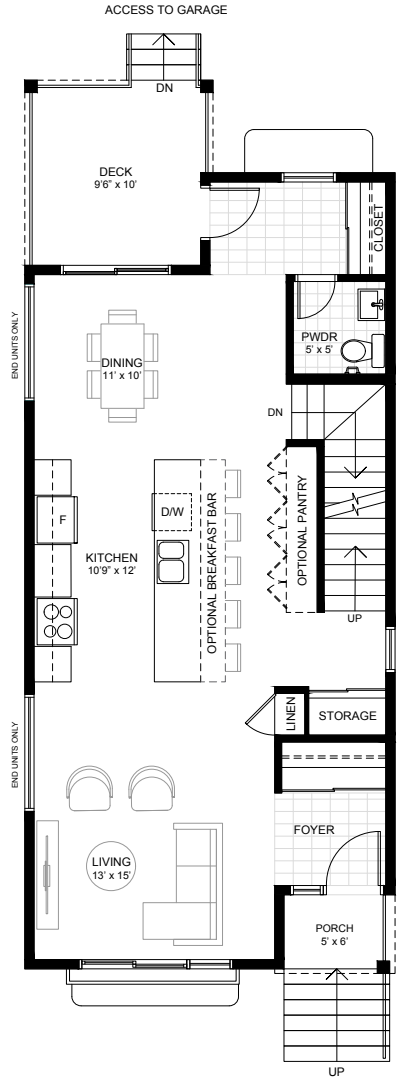


# UPPER VISTA

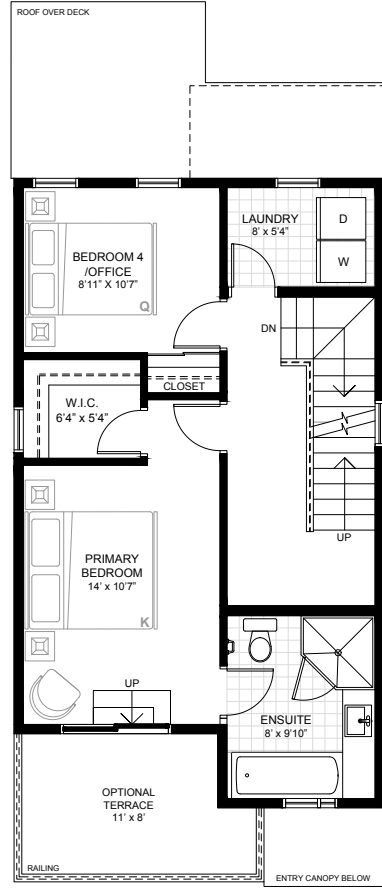
THE LAKEVIEW RESIDENCES ON DODDS LAKE



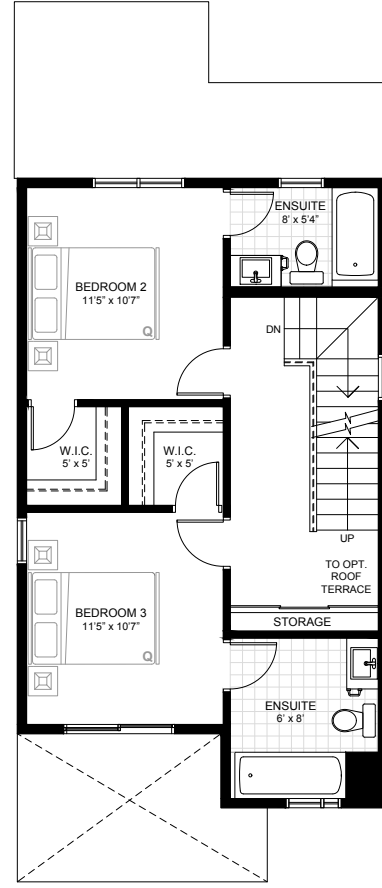
**BASEMENT**  
788 SQ FT



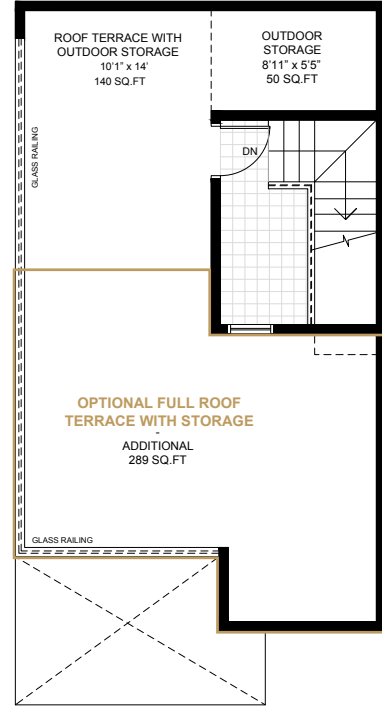
**MAIN FLOOR**  
788 SQ FT



**SECOND FLOOR**  
636 SQ FT



**THIRD FLOOR**  
636 SQ FT



**OPTIONAL ROOF TERRACE**  
FLOOR PLAN  
190/479 SQ FT

The Developer intends to commence the introduction of the above project to potential purchasers. The Developer has prepared certain information, brochures, descriptions, materials, plans, specifications, and details (all collectively called "marketing materials") regarding the Project and is disclosing and discussing the same with potential purchasers. All marketing materials are being provided for illustration and discussion purposes only and may not be relied upon in any way. Any such materials are preliminary and may be changed or modified in any way, at any time, without notice to any party. Details, dimensions, sizes, specifications, layouts, and materials are approximate and are subject to change without notice. Pricing and availability are subject to change without notice. The Vendor reserves the right to substitute any materials used in construction. The Vendor, in its sole discretion, may, at any time, without notice to any party, make any deletions, changes, or modifications to the Features and Finishes and any Marketing Material. Renderings are an artist's concept. Any statistics, financial, descriptions, and photos herein are for illustration purposes only. Consult your own sales representative or relevant professional. No representation or warranty, express or implied, is made herein and no reliance should be made in any way. E.&O.E.

# Waterton

2,252 SF

3  3.5  1 



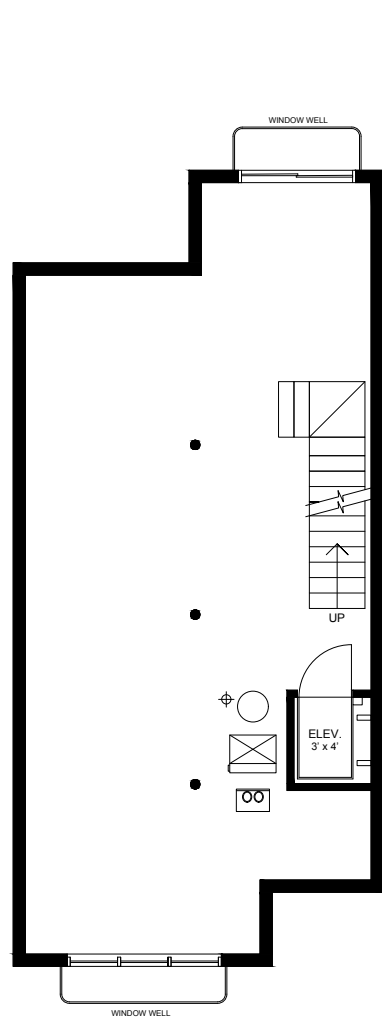
## Waterton

Inspired by Waterton Lakes National Park, a scenic area located south of Innisfail.

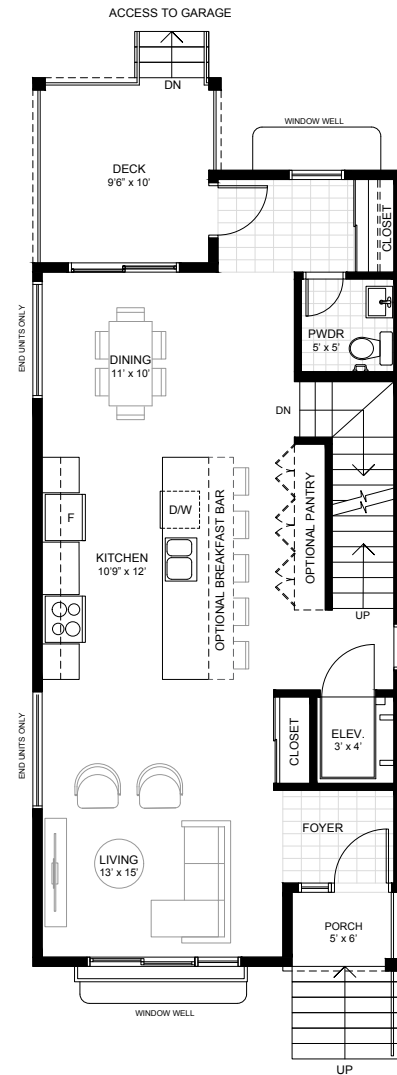


# UPPER VISTA

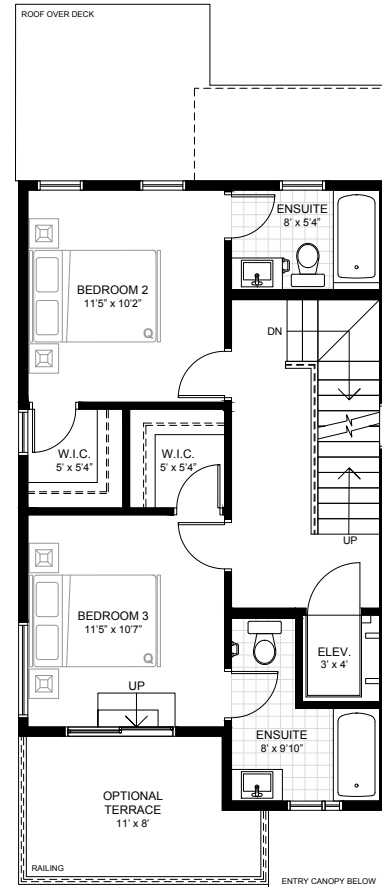
THE LAKEVIEW RESIDENCES ON DODDS LAKE



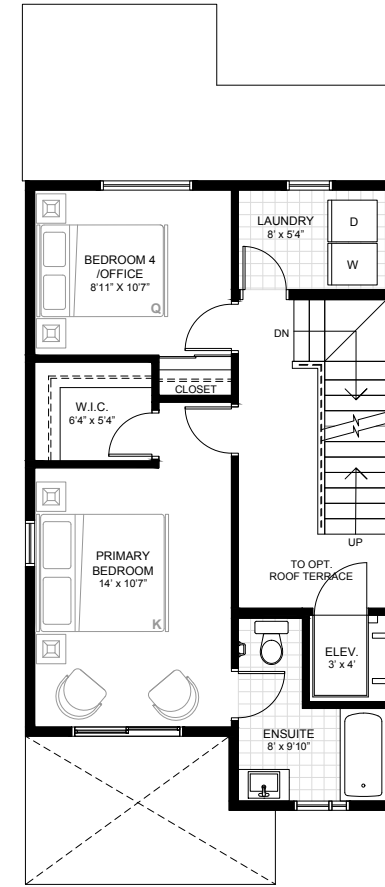
**BASEMENT**  
788 SQ FT



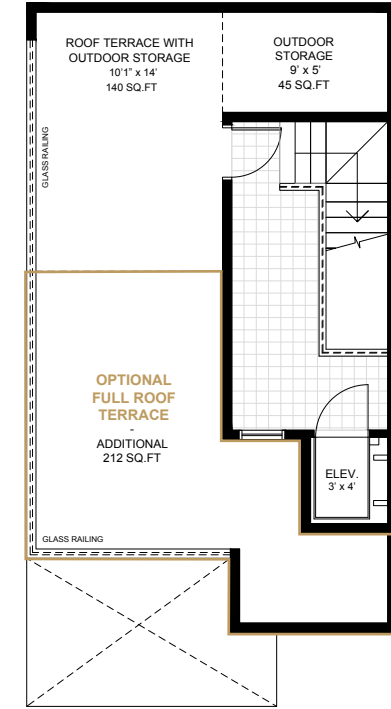
**MAIN FLOOR**  
788 SQ FT



**SECOND FLOOR**  
636 SQ FT



**THIRD FLOOR**  
636 SQ FT



**OPTIONAL ROOF TERRACE**  
FLOOR PLAN  
185/397 SQ FT

The Developer intends to commence the introduction of the above project to potential purchasers. The Developer has prepared certain information, brochures, descriptions, materials, plans, specifications, and details (all collectively called "marketing materials") regarding the Project and is disclosing and discussing the same with potential purchasers. All marketing materials are being provided for illustration and discussion purposes only and may not be relied upon in any way. Any such materials are preliminary and may be changed or modified in any way, at any time, without notice to any party. Details, dimensions, sizes, specifications, layouts, and materials are approximate and are subject to change without notice. Pricing and availability are subject to change without notice. The Vendor reserves the right to substitute any materials used in construction. The Vendor, in its sole discretion, may, at any time, without notice to any party, make any deletions, changes, or modifications to the Features and Finishes and any Marketing Material. Renderings are an artist's concept. Any statistics, financial, descriptions, and photos herein are for illustration purposes only. Consult your own sales representative or relevant professional. No representation or warranty, express or implied, is made herein and no reliance should be made in any way. E.&O.E.